



विद्या सर्वार्थ साधिका

ANANDALAYA
PERIODIC TEST – 1
Class : VII

Subject: Science

Date: 17/07/2019

M.M : 50

Time : 2 Hours

General Instructions:

1. Question paper will consist of two sections A and B.
2. Section B consists of Multiple Choice Questions.
3. You have to attempt both the sections separately.

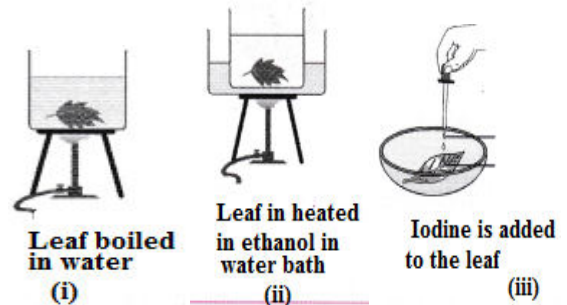
SECTION A

1. What is wind? Mention a factor responsible for the formation of wind (1)
2. You have been asked to maintain a garden. How will you minimize the use of water for the irrigation of plants in the garden? (1)
3. A goat eats away all the leaves of mint plant. However, the new leaves could be seen sprouting on the plant. How did the plant survive without the leaves? (1)
4. A person has a white shirt and a black shirt. Which shirt will make him comfortable in winter and in summer? Give reason for your answer. (2)
5. How does the difference in locations of Srinagar and Thiruvananthapuram affect the climate of these places? (2)
6. (a) Define the term nutrient. (2)
(b) Write any one difference between host and parasite.
7. "Air expands on heating and contracts on cooling". Explain the given statement with the help of an activity. (3)
8. (a) What are the conditions for the conduction of heat? (3)
(b) For setting curd, a small amount of curd is added to warm milk. The microbes present in the curd help in setting if the temperature of the mixer remains approximately 35° C to 40° C. at places, where room temperature remains much below the range, setting of curd becomes difficult. Suggest two ways to set curd in such a situation.
9. Where will you find an animal with (a) large ears and big, long pointed teeth (b) long colourful beak? Why? (3)
10. (a) There are ten tube-wells in a lane of fifty houses. What could be the long term impact on the water table in the area? (3)
(b) How the increasing industrial activities are causing the depletion of water table?
11. Akshar forgot his snack box in the school. When he opened it the next day in the evening he saw white threads like structures on the left over food. (3)
(a) Identify the organism that he observed on the food.
(b) Name and explain the type of nutrition exhibited by this organism.
12. (a) Write the chemical equation of photosynthesis. (3)
(b) Will the Carnivores survive if the plants stop performing photosynthesis? Justify your answer by listing any two scientific reasons.

13. (a) Describe a clinical thermometer with the help of a diagram. (5)
 (b) Write any two differences between a clinical thermometer and a laboratory thermometer.
14. (a) State two conditions due to which tropical rainforests support a wide variety of plants and animals. (5)
 (b) What are the various body features which make penguin a good swimmer?
 (c) The bird X moves from Siberia to places like Rajasthan and Haryana in India during a particular season. It stays in India for a few months and then goes back. Name the bird. What general name is given to birds like X?

15. Observe the given figure (i), (ii) and (iii) that depicts the procedure of an experiment based on photosynthesis process and answer the following questions.

- (a) Write the aim of the experiment.
 (b) Why is the leaf first boiled in water and then heated in alcohol?
 (c) What is your observation after adding a few drops of iodine to the leaf?
 (a) Draw the leaf to show the result of iodine test.

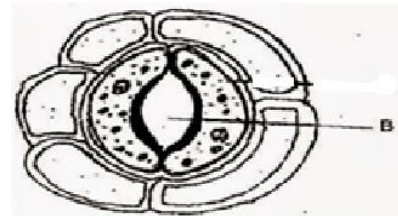


SECTION B

16. Land breeze and sea breeze are caused due to (1)
 (a) radiation of heat (b) conduction of heat (c) convection of heat (d) reflection of heat
17. High speed winds are accompanied by (1)
 (a) reduced temperature. (b) increased temperature.
 (c) reduced air pressure. (d) increased pressure.
18. An iron ball at 95°C is dropped in a mug containing water at 50°C . The heat will (1)
 (a) flow from iron ball to water. (b) not flow between them.
 (c) flow from water to iron ball. (d) increase the temperature of both.
19. The water - bearing layer of the earth is called (1)
 (a) Conifer (b) Hydrosphere (c) Aquifer (d) Water table
20. Which of the following processes will be affected due to water scarcity on plants? (1)
 A. Evaporation B. Photosynthesis C. Respiration D. Transpiration
 (a) A and B (b) B and C (c) A and C (d) B and D
21. The organism that replenishes the nutrients of the soil (1)
 (a) Rhizobium (b) Mushroom (c) Rhizopus (d) Algae

22. The figure of the leaf stomata is given. The functions of the part labeled as B are (1)

- (a) Respiration and Photosynthesis
 (b) Transpiration and Photosynthesis
 (c) Respiration and Transpiration
 (d) Photosynthesis and Transpiration



23. Which of the following is not true about saprophytic plants? (1)
 (a) They are bluish green or green in colour.
 (b) They are commonly seen during and after rain.
 (c) They do not have photosynthetic pigments.
 (d) They play an important role in decomposition of dead plants and animals.